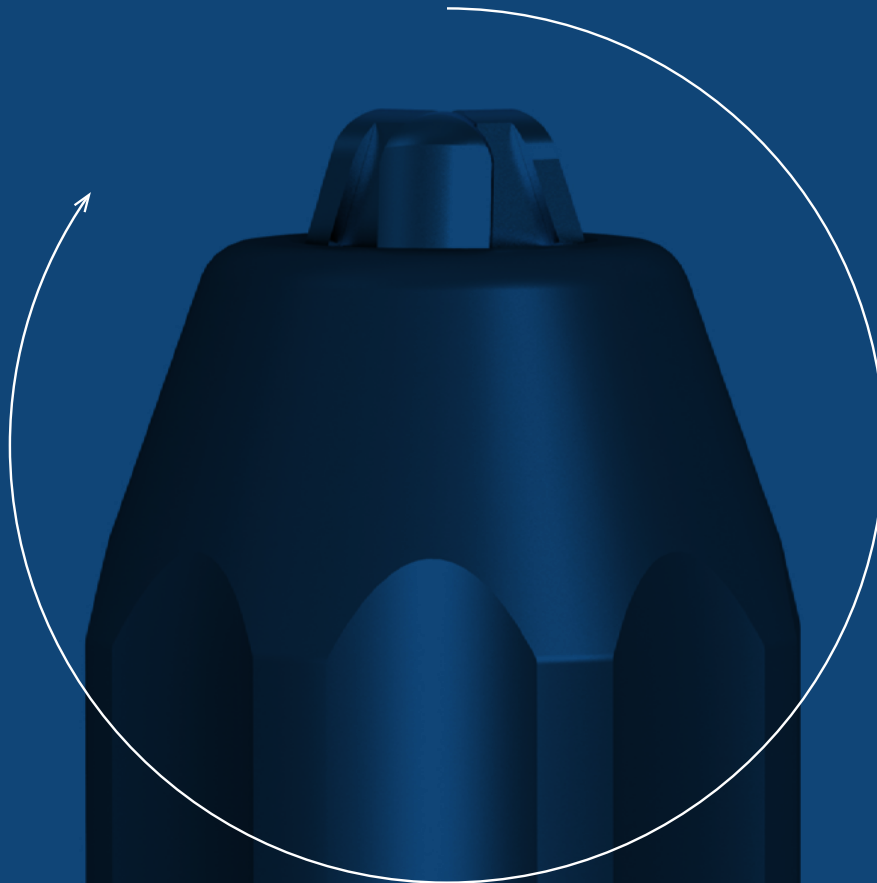


# LLAMBRICH

beyond precision



## SURGICAL DRILL CHUCKS

**Stainless Steel Drill Chucks  
for Surgical Instruments**

---

llambrich.com

since 1957

---

Llambrich® originated from Barcelona, Spain and has been designing, engineering and manufacturing the worlds most complete Stainless Steel Drill Chuck program for use in manual, power & air surgical instruments.

Llambrich® is the only drill chuck manufacturer in the world to hold the ISO 13485 certification for medical drill chuck products.



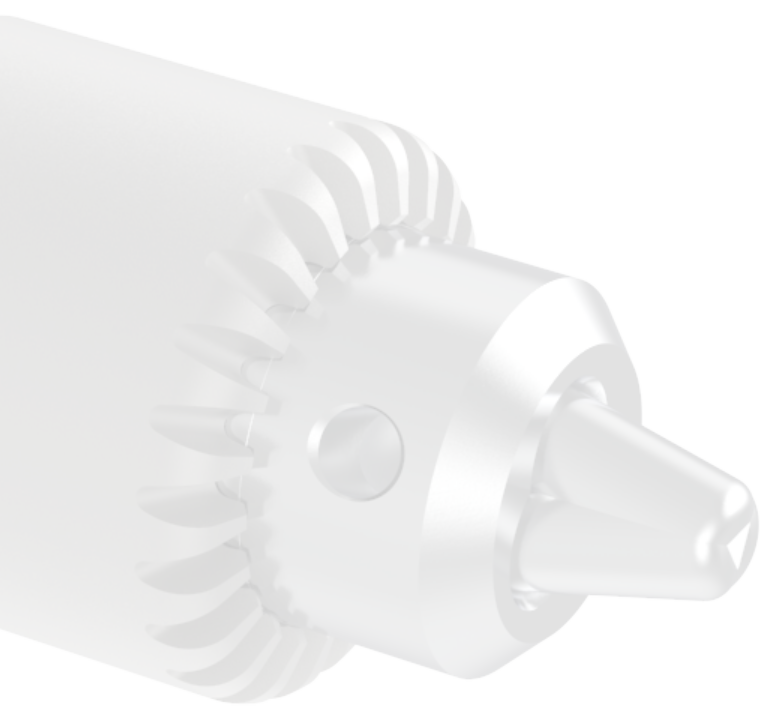
Our commitment to our customers

To work hard everyday to be regarded in the surgical instrument marketplace as a supplier that is friendly, helpful and easy to do business with.

To offer innovative high quality solutions at a competitive price.

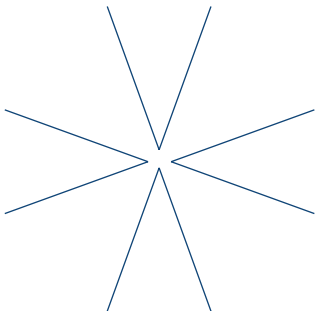
To be receptive and proactive in identifying solutions for our customer needs and requirements.

If you have any ideas, suggestions or comments on how we can better serve you please call +34 93 264 9623 or e-mail us at info@llambrich.com



TESTIMONIALS

- “Llambrich chucks look more medical”
- “Great performance in the autoclave test”
- “Looks innovative”
- “It is nice to have a unique look”



Index

CSS Inox page 4

Stainless Steel **Keyed** Drill Chucks



SP Inox page 5

Stainless Steel **Keyless** Drill Chucks



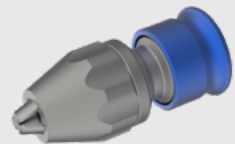
SPH Inox “Hybrid” page 6

Stainless Steel **“Hybrid”** Drill Chucks



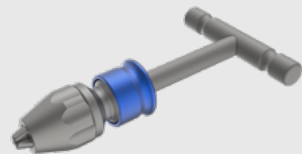
SPT Inox page 7

Stainless Steel **Keyless** Drill Chucks **w/Lock System**



T-Handle Chucks page 8

Stainless Steel Drill Chucks **w/T-Handle**



Drill Chuck Attachments page 9

Stainless Steel Drill Chucks **w/Quick Connectors:**  
AO small, AO large, Trinkle, Hudson, Harris,  
Zimmer and more



Stainless Steel KEYS page 10

Chuck **Keys** for CSS & SPH-Hybrid Stainless Drill Chucks





# SPH Inox

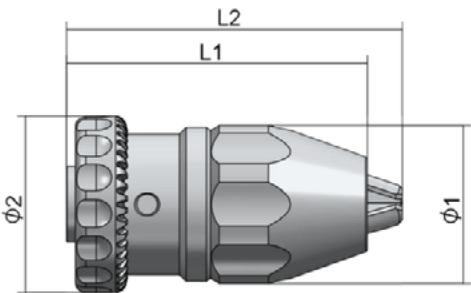
## Stainless Steel “Hybrid” Drill Chucks

○ Combines the accuracy of a keyless chuck and the tightening torque of a keyed chuck:

**Used as a Keyless chuck.** Self-tightening mechanism automatically increases the clamping forces in proportion to the increase in torque during the drilling operation. This prevents tool slippage in clockwise rotation only.

**Used as a Keyed chuck.** Tightening force is 2 times more than a conventional keyed chuck, allowing the most demanding drilling operation in any rotation direction of the drill or surgical tool: clockwise, counterclockwise or oscillatory.

- Specially designed for medical and veterinary surgical instruments.
- All components are free of sharp edges: Excellent choice for use when operating with rubber gloves.
- Manufactured in stainless steel series 300 and 400.
- Undergo passivation processes to prevent corrosion.
- Resistant to autoclaving.
- For traceability according to ISO 13485, all chucks and keys are identified with a lot number. SPH chucks and their chuck keys (see page 10) are ordered separately.
- With thru hole for insertion of drills, reamers, pins and other surgical tools used in the medical field.

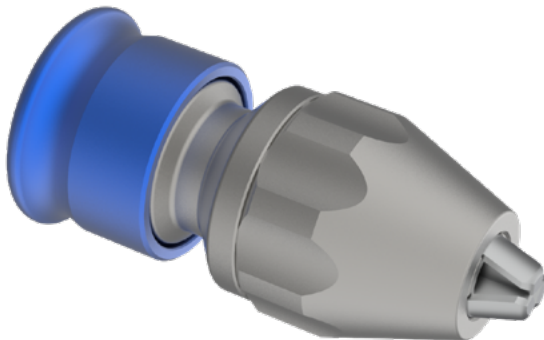
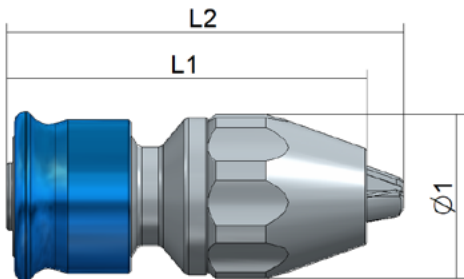


CODE #	MODEL #	CAPACITY RANGE MIN-MAX		MOUNT	KEY	Ø THRU HOLE		Ø1	L1	L2	Ø2	WEIGHT					
		inches	millimeters			in.	mm	in.	mm	in.	mm	lbs	gram				
PHI031208	SPH-03 J0 FGE	.012 -.118	0.3 - 3	J0	K0T	0.16	4.2	1.06	27	1.85	47	2.00	51	1.14	29	0.29	130
PHI030908	SPH-03 R3/8 FGE			3/8-24													
PHI031808	SPH-03 R5/16 FGE			5/16-24													
PHI070410	SPH-07 J1 FGE-C	.012 -.291	0.3 - 7.4	J1	K1T	0.20	5.3	1.26	32	2.32	59	2.59	66	1.34	34	0.50	225
PHI070910	SPH-07 R3/8 FGE-C			3/8-24													

# SPT Inox

## Stainless Steel Keyless Drill Chucks w/Lock System

- For hand tightening, no need of a key.
- Unique and innovative design equipped with a lock system feature to prevent slippage of surgical tools (drills, reamers, pins) in any rotation direction of the drill or surgical tool: clockwise, counterclockwise or oscillatory.
- Specially designed for medical and veterinary surgical instruments.
- All components are free of sharp edges: Excellent choice for use when operating with rubber gloves.
- Manufactured in stainless steel series 300 or 400, and anodized aluminium.
- Undergo passivation processes to prevent corrosion.
- Resistant to autoclaving.
- All chucks are identified with a lot number for traceability according to ISO 13485.
- With thru hole for insertion of drills, reamers, pins and other surgical tools used in the medical field.



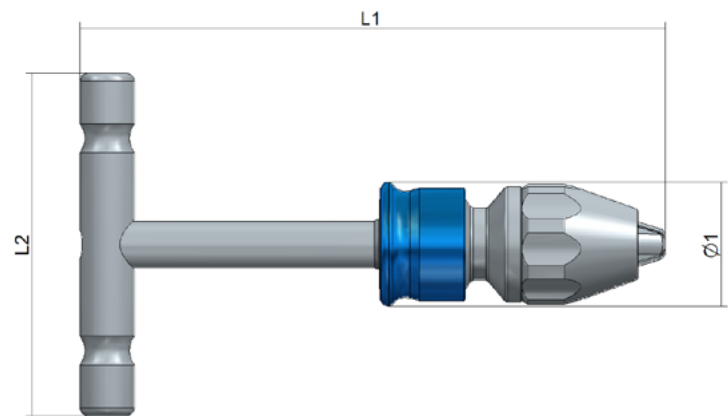
CODE #	MODEL #	CAPACITY RANGE MIN-MAX		MOUNT	Ø THRU HOLE		Ø1		L1		L2		WEIGHT	
		inches	millimeters		in.	mm	in.	mm	in.	mm	in.	mm	lbs	gram
PTI070911	SPT-07 R3/8 FGE	.012 - .291	0.3 - 7.4	3/8-24	0.20	5.3	1.26	32	2.68	68	2.95	75	0.48	220



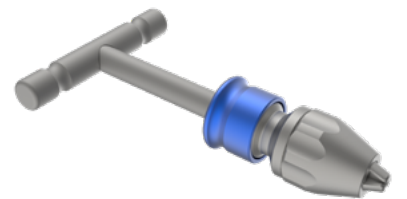
# T-Handle Chucks

## Stainless Steel Drill Chucks w/T-Handle

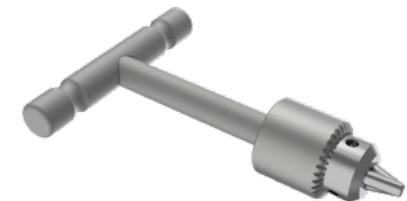
- For insertion of medical pins (Steinmann, Schanz, etc.)
- Available for all Llambrich stainless steel drill chuck series : Keyed (CSS), Keyless (SP), Hybrid (SPH) & Keyless w/Lock System (SPT).
- Specially designed for medical and veterinary surgery.
- All components are free of sharp edges: Excellent choice for use when operating with rubber gloves.
- Manufactured in stainless steel series 300 or 400, and anodized alluminium.
- Undergo passivation processes to prevent corrosion.
- Resistant to autoclaving.
- All chucks are identified with a lot number for traceability according to ISO 13485.
- With thru hole Ø5 mm (0.196 inches) for insertion of surgical pins.



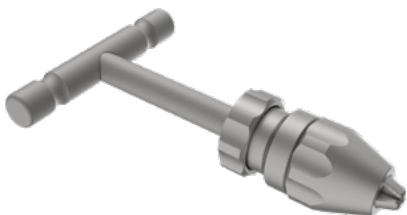
PART #	MODEL #	CAPACITY RANGE MIN-MAX		KEY	Ø THRU HOLE		Ø1		L1		L2		WEIGHT	
		inches	milimeters		in.	mm	in.	mm	in.	mm	in.	mm	lbs	gram
PTI07091T	SPT-07 R3/8 FGE-T	.012 - .291	0.3 - 7.4	Not required	0.20	5.3	1.26	32	5.94	151	3.46	88	0.81	370
PHI07091T	SPH-07 R3/8 FGE-T			K1T			1.33	34	5.59	142			0.82	372
PNI07091T	SP-07 R3/8 FGE-T			Not required			1.26	32	5.59	142			0.80	364
CSS06091T	CSS-06 R3/8 GE-DS-T	0.20 - .291	0.5 - 7.4	K1M	0.21	5.5	1.10	28	5	127			0.57	260



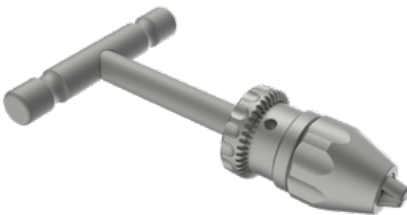
PTI07091T



CSS06091T



PNI07091T



PHI07091T

# Drill Chuck Attachments

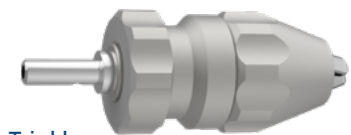
## Stainless Steel Drill Chucks w/Quick Connetors:

*AO small, AO large, Trinkle, Hudson, Harris, Zimmer and more*

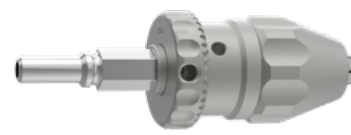
- Available on demand for all Llambrich stainless steel drill chuck series : Keyed (CSS), Keyless (SP), Hybrid (SPH) & Keyless w/Lock System (SPT).
- Quick connetors available: AO, small or large, Trinkle, Hudson, Harris, Zimmer, and others according to customer specifications.
- Specially designed for medical and veterinary surgical power tools.
- All components are free of sharp edges: Excellent choice for use when operating with rubber gloves.
- Manufactured in stainless steel series 300 or 400, and anodized alluminium.
- Undergo passivation processes to prevent corrosion.
- Resistant to autoclaving.
- All chucks are identified with a lot number for traceability according to ISO 13485.
- With thru hole for insertion of drills, reamers, pins and other surgical tools used in the medical field.



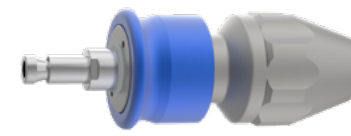
Zimmer



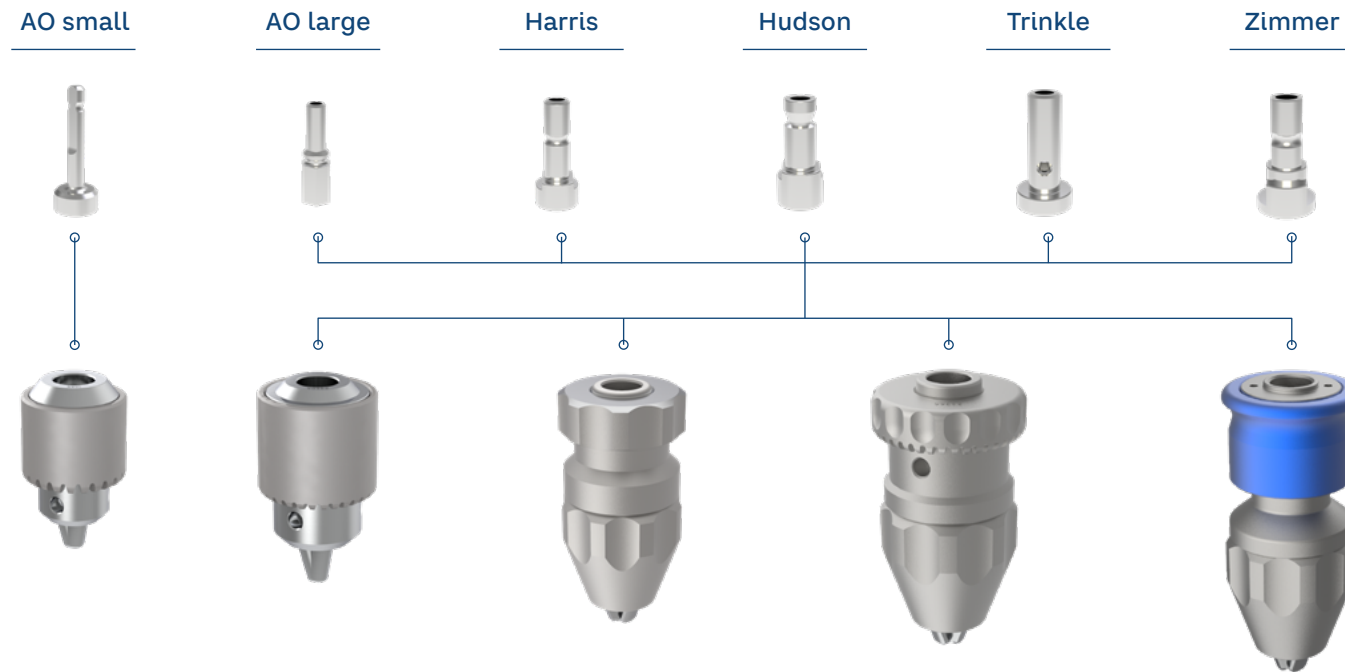
Trinkle



AO large



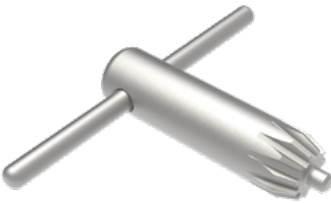
Hudson



# Stainless Steel KEYS

Chuck Keys for CSS & SPH-Hybrid Stainless Drill Chucks

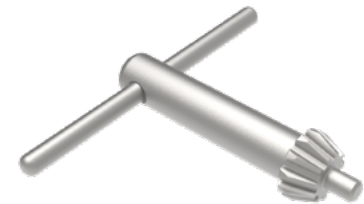
- Manufactured in stainless steel series 300 and 400.
- Undergo passivation processes to prevent corrosion.
- Resistant to autoclaving.
- Identified with a lot number for traceability according to ISO 13485.
- Interchangeable with Jacobs equivalent keys.



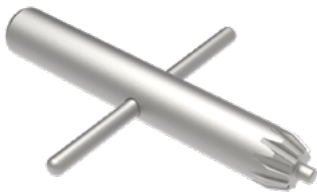
KOM <sup>(1)</sup>



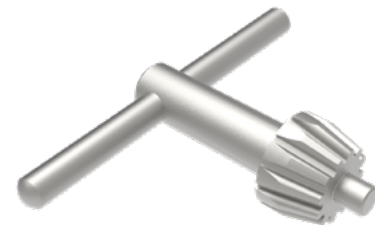
KOM <sup>(2)</sup>



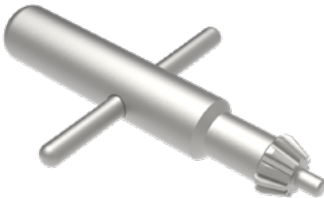
K1M



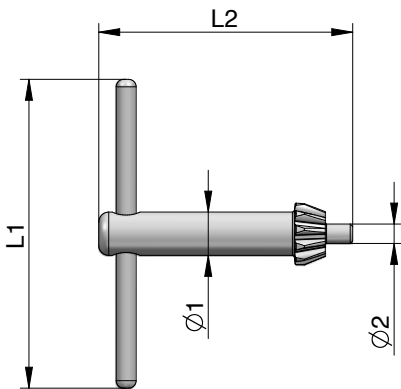
K0T



K10M

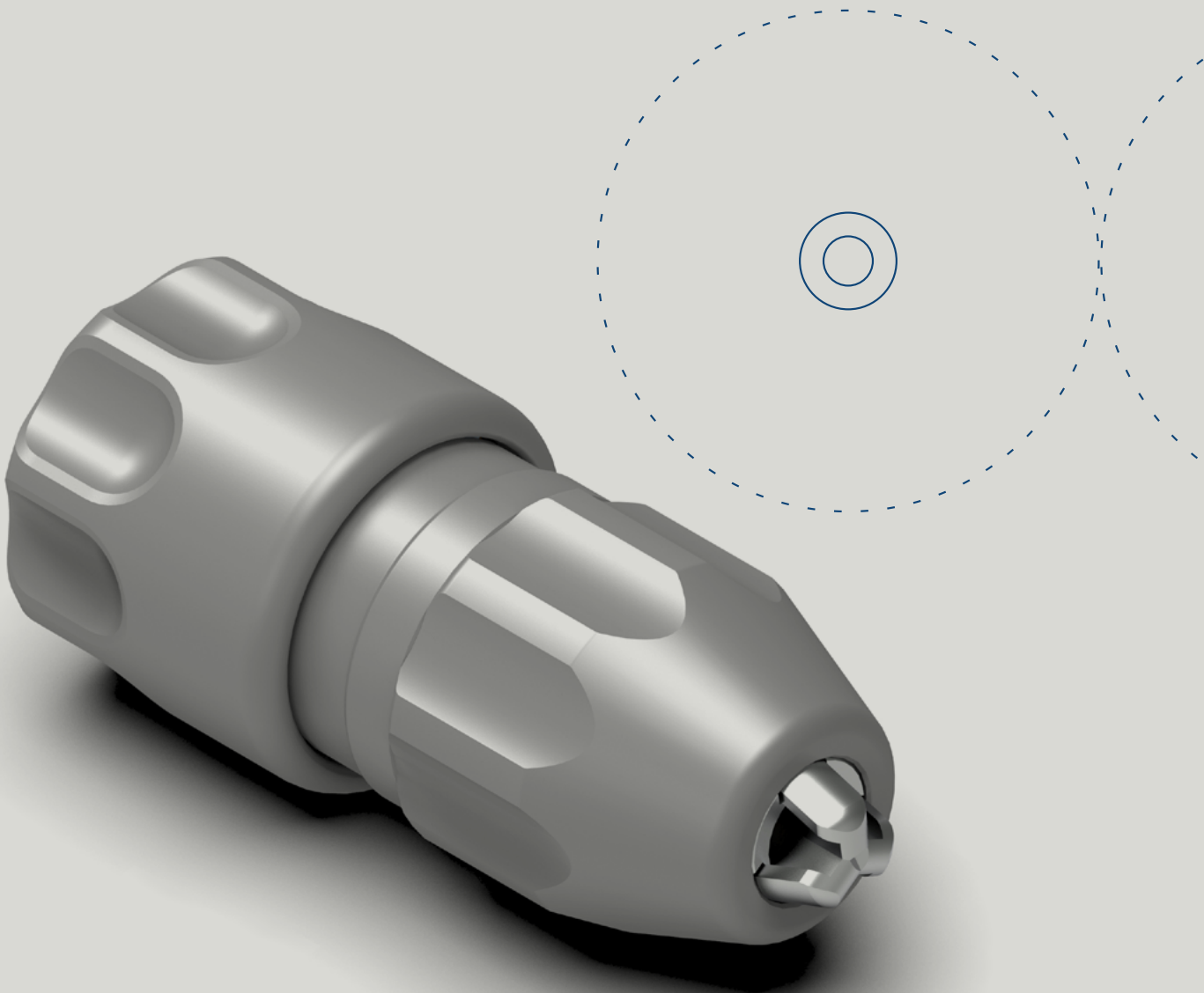


K1T



CODE #	MODEL #	KEY FOR DRILL CHUCK MODEL	L1		L2		Ø1		Ø2		WEIGHT	
			in.	mm	in.	mm	in.	mm	in.	mm	lbs	gram
ASS031202	K0T Super Grip	SPH-03 see page 6	2.362	60	3.149	80	0.464	11.80	0.124	3.16	0.15	67.30
ASS061202	K1T Super Grip	SPH-07 see page 6	2.362	60	3.149	80	0.551	14	0.155	3.95	0.18	81.80
ASS041210	KOM <sup>(1)</sup>	CSS-04 see page 4	2.440	62	1.752	44.50	0.433	11	0.125	3.19	0.07	35.30
ASS041200	KOM <sup>(2)</sup>	CSS-04 see page 4	2.362	60	1.299	33	0.275	7	0.125	3.20	0.03	16.50
ASS061210	K1M	CSS-06 see page 4	2.440	62	2.011	51.10	0.342	8.70	0.155	3.95	0.06	29.00
ASS101200	K10M	CSS-10 see page 4	2.795	71	1.909	48.50	0.393	10	0.216	5.50	0.10	46.30

(1) Classic Style (2) Light Style



# INOX

## The world most complete Drill Chuck Program

FOR MANUAL, POWER & AIR INSTRUMENTS



**LLAMBRICH**  
beyond precision

**LLAMBRICH Precisión, S.L.**

Av. Mare de Déu de Bellvitge, 271-273  
E-08907 L'Hospitalet de Llobregat  
Barcelona - Spain

Tel. +34 93 264 96 23

[www.llambrich.com](http://www.llambrich.com)  
[info@llambrich.com](mailto:info@llambrich.com)

